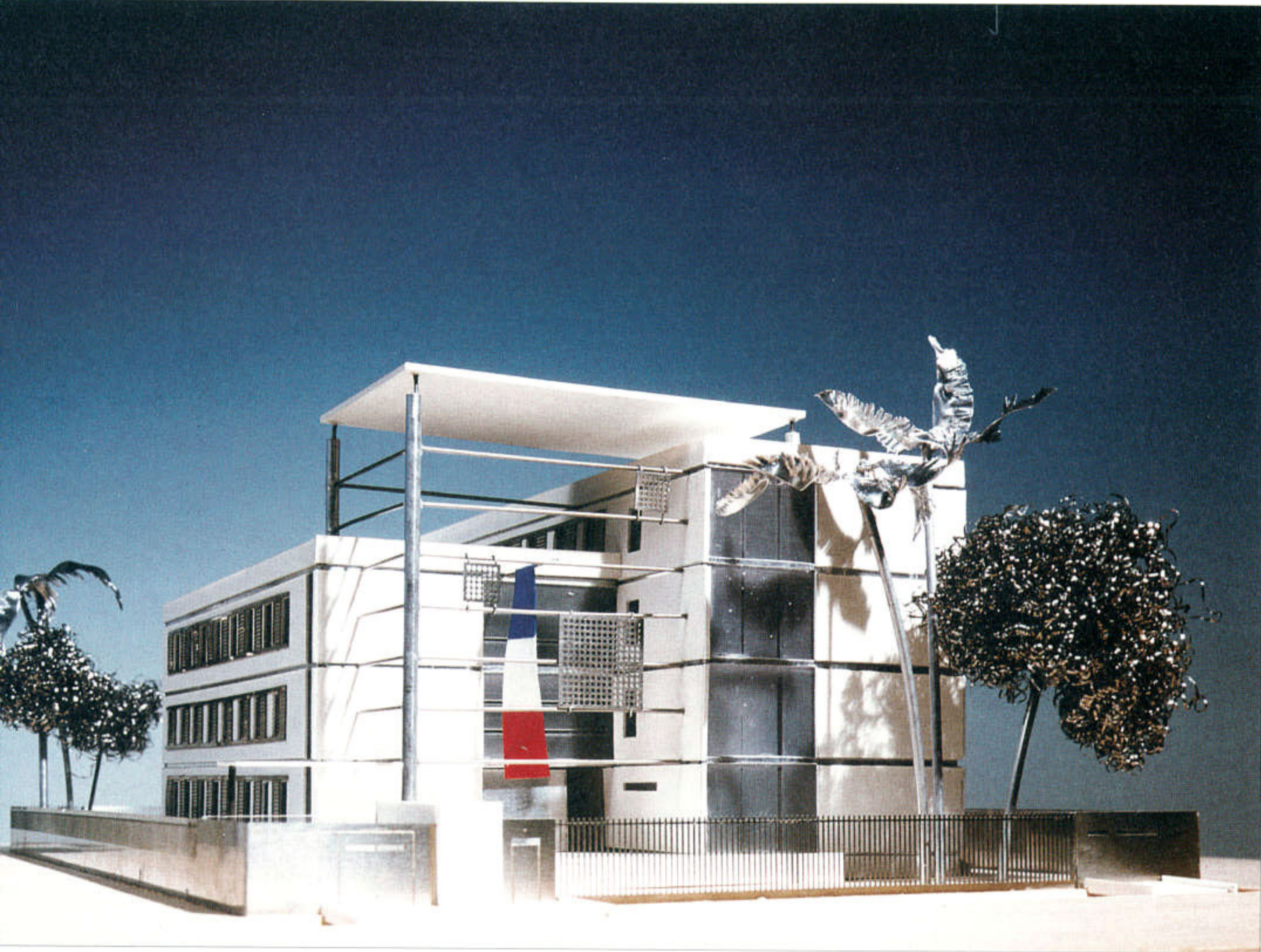


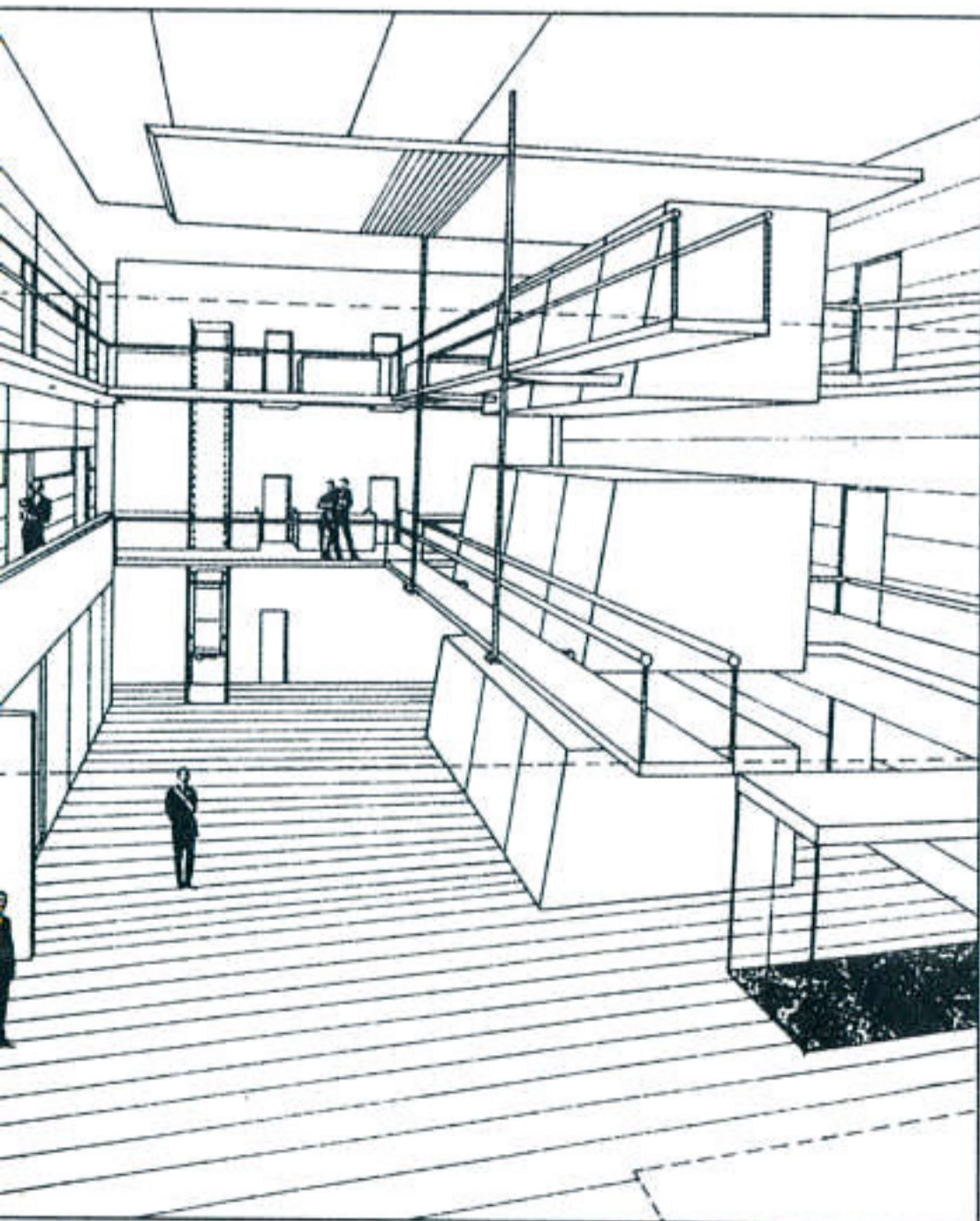
# WORLD ARCHITECTURE

ISSUE NO. 38 US\$11.95 UK£10



**French Embassy, Singapore 1996**  
*in association with Dubus-Riché of Paris*

The project was designed in association with architects Dubus-Riché of Paris, who "see the building as the embodiment in the midst of this city-state of a certain French spirit." Public spaces are centred on the atrium; a transparent lift "transports the personnel and the visitors through an interior world of teak, honey-tinted wood and copper and pale gold hues."



## TSP ARCHITECTS + PLANNERS

SCANDINAVIA REPORT  
ALAN DELANEY IMAGES  
JOURNEY INTO CYBERSPACE  
MORE MAKOVECZ MAGIC